



## Cultivar/Strain Guide and Inventory

**Updated: 7/1/2017**

**Foreword and disclaimer:** Information purposes only, no guarantees on accuracy of information, I am not liable for damages, lost time or material. The information is intended for clients of DGA. A lot of the information contained is a collaborative effort of DGA and the growers. I do not mind you sharing the information but I ask that you give credit to DGA, and the growers that submitted information, this represents hundreds of hours of research, time and a significant amount of money was spent to compile this information. I have plenty of opinion in this guide but take everything with a grain of salt. I have my own viewpoint but I try to be as objective and truthful as possible.

This is a live document, things can and will change, look at the date on the top of the page for revisions.

Thank you, and thanks to all the people that put the data and feedback out there to make this document possible.

Please look at the following if you have questions not related to cultivars.

- 1) Clones Vs Seeds, advantages, disadvantages.
- 2) Integrated Pest Management, IPM of clones and Quarantine Practices.
- 3) Delta Genetics History & Mission Statement.

6/30/17 These documents are currently in the works, and will be posted to the website.

Note: I use the term strain and cultivar interchangeably, well this is incorrect. I keep using the slang term to communicate better. The correct botanical term is "cultivar". The cannabis universe has its own botany-slang and to be honest, at the risk of sounding sanctimonious I prefer we all use consistent terms as defined in the botany world.

## Dark Heart Alien OG

Origin: Dark Heart Nursery California

Status: **Mother in recovery, no cuts planned till fall. 2017. Mother is having some trouble after I repotted to coco, if you have cuts of Alien OG I could use it.**

Lineage: Alien Technology is a very special landrace Afghani strain that was brought back fairly recently from an unnamed village in Afghanistan. The other parts of the equation are Kyle Kushman's Las Vegas Purple Kush and the original Tahoe OG cut, which some believe to be the original OG Kush. The Alien OG cross was created and developed by Swerve of Cali Connection

History: Release in late 2016, Alien OG cuts were sent to a legal cultivation site in Anchorage. Some positive feedback, picture by local grower.



## Dark Heart Sherbert

Origin: Dark Heart Nursery California

(907) 770-9997  
info@ak.steephill.com

**Cannabinoid Profile**

Customer: ~~XXXXXXXXXX~~  
Sample name: Sunset Sherbet

AKGL LIMS ID: ~~XXXXXXXXXX~~ Sample type: Flower Date submitted: 05/22/2017  
METRC #: n/a Sample mass (g): 0.50 Date tested: 05/24/2017  
Test site: Steep Hill Alaska Instrument: HPLC-PDA Report date: 05/25/2017

Cannabinoid	% mass
Δ <sup>9</sup> -THC	0.9%
THCA	24.8%
CBD	---
CBDA	0.1%
CBN	---
CBC	---
CBDV	---
CBDVA	---
CBG	0.4%
THCV	---
Δ <sup>8</sup> -THC	0.1%



Lineage: Girl Scout Cookies x Pink Panties Hybrid Sativa Indica

Status: **New mothers being grown, No cuttings available at this time Late 2107 Expected Return**

History: Released 2016, positive feedback from growers commenting on its aroma. THCA tested at 24+% Sample name was called "Sunset Sherbert" it is not, its Sherbert.

The description is accurate, the Sherbert cut is true to phenotype description. It has a orange creamlike aroma, the GSC heritage shows when its grown. Its a little bit lanky, with nugget type flowers. The yield is low but the quality is high.

## Dark Heart Chemdawg 4

Origin: Dark Heart Nursery California

Lineage: Chemdawg, phenotype #4.

Status: **New mothers being grown, no cuttings available at this time Late 2017 expected return.**

History: Released Late 2016 A lot of positive feedback on this clone.



This is a favorite of growers, great potency, dense well sized flowers, and good yield. This is one of my favorites, just an outstanding blend of potency, density, and yield. This is the cut you want if you like the chemdawg line. Dispensary test lists THC over 25%.



## Dark Heart Chocolate Hashberry

Origin: Dark Heart Nursery California

Lineage: BREEDER: Purple Caper Seed  
Company TYPE: 50/50 Hybrid GENETICS:  
Blackberry Kush x Chocolate Kush  
(Chocolate Kush is Moroccan Hashplant x Chocalope Cheese)

Status: New mothers being grown, no

cuttings available at this time Late 2017 expected return.

History: Released Late 2016 some feedback on this clone, but hasn't gotten the rave reviews like other clones.

Awards: Emerald Cup 2016 13<sup>th</sup> place. DHN should be the same cut as the chocolate hashberry.





## Dark Heart Purple Cadillac

Origin: Dark Heart Nursery California

Lineage: BREEDER: DHN SourceTYPE: Indica Dominant The Black x Blackberry Kush x Purple Erkle



Status: Mother in production, limited clones.

History: Released Late 2016 some feedback on this clone,

I really like this “purple” clone, without a doubt this one of the best representations of a purple cultivar of cannabis I have seen. The calyxes are purple. This is not cold induced purpling this is actual color.

## **Dark Heart SFV OG**

SFVOG is discontinued, Mother was lost some clones were released in 2016. Its unlikely I will return this to production. One of the problems is its hard to clone even with typical rooting hormone treatments. I selected this cut because its relatively famous and usually is found in shops. A grower Sub LBC is partial to the SFVOG cut but its unknown to me if the DHN cut and Sub's cut were the same.

Even Sub said there was difficulty in cloning the cut. I agree the failure rate was high or resulting clones needed extended veg time. Its possible there are clones circulating in the Anchorage area, it did make it to some customers in late 2016.

## **Dark Heart The White**

The White is discontinued, mother was sold to a local cultivation site but I think they culled it. The white seems to have breeding potential, but does not have good qualities for flower production, Its unusual in that it has slow vegging qualities, and had small statue with a low yield. Another interesting point is the comments about lack of taste or aroma. I think The White was bred mainly for THC and resin content, and not about aroma. Its suitable for stealth growers.

The white seems to have breeding potential, its found in several high-quality cultivars like WiFi, White Master Kush, and so on. It seems to pass its resin production to whatever its crossed out with.

Currently there are no plans to get another cut or carry The White again, only a handful of cuts were released in Late 2016 and early 2017.

## **Grass Roots Kens Grand Daddy Purple**

Origin: California

Grass Roots KGDP mother was lost due to a watering mistake, I might look for a replacement of KGDP but from a different nursery, aggressive vigor, and good feedback from customers that were using it for medical purposes. It was released Late 2016 and early 2017 until the mother was lost.

## **Greenlight Candyland**

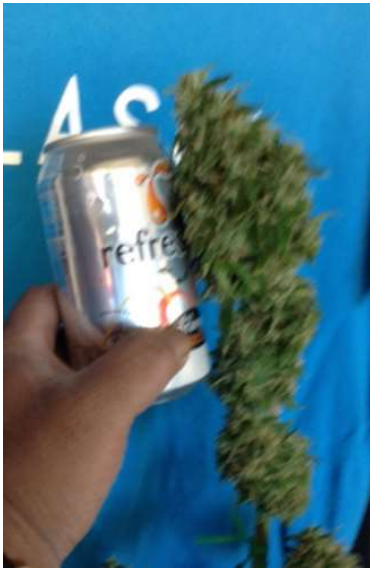
Origin: California

Clone showed signs of dudding when vegging. Its showed branch brittleness and generally bad appearance, its unknown if dudding is a virus from TMV or simply over duplication, there are a lot of unknowns surrounding the cut. In order to protect the nursery Candyland was culled in 2016 with no

cuts passed out. At this time no replacement is planned. To be fair it may not be dud related, the cause of duds is unknown and I did not run a TMV test kit on it.

## High Noon Black Lime Reserve/ Midnight Farms Black Lime Reserve

Origin: California



Original Breeder: Aficionado, nursery selected Phenotype.

Status: **Mother in recovery, plans of discontinuing it in favor of a Black Lime #3, the Terpenes on the Black Lime #3 are superior to the Cali cut, I will do one more cut before I remove it.**

Lineage: Indica strain that descends from Woodman Canyon Oil Can, Lime Afghani, Northern Lights, Purple Kush, and Chemdawg Special Reserve. (Leafy)

History: Cuts from both nurseries were obtained in California, Both cuts were tested, and they did ok but we are still a bit confused about the BLSR line, a tester of mine said the Cali BLSR both versions had good structure but just did not do well against a few selectively bred BLSR. (Black Lime 2, Black Lime 3) There has been good feedback but just not great potency but excellent structure, and generally positive feedback on terpene quality. It really has that dense nugget structure that a lot of growers are

looking for. I have to look but I think BLSR tests in the high teens, I'll have to look for that data.

A breeder friend of mine really likes BLSR the structure potential is there, it almost reminds me of afghani with the thick dense colas but with good mold resistance. I was able to get can sized colas from 1 gallon SOG in soil.

Black Lime Special Reserve SOG tester in 1 gallon soil. I think that this is the kind of look that people are after, chunky nuggets. Something that I saw when I was down in Medicino, chunky dense, BLSR had that structure.

Black Lime did win 2<sup>nd</sup> place in 2104, But its unknown if this is the cut that won the cut. And this is unconfirmed, but Kyle Kushman submitted the cut to MF. I don't know if this is true, I'll update this if I find out more information.

## **Kinship ChemDawg Special Reserve**

Notes: Chemdawg Reserve Emerald cup winner 1<sup>st</sup> place, its unknown if this was the cut that was used in the 2012 Emerald Cup win.

Discontinued cut, generally speaking this resembled some of the chemdawg cultivars I've run over the years, Lanky unkept structure however the terpene quality and the smoke and potency reports have been positive. One of the problems with CDSR is its hard to clone, even with typical hormone treatments, extended veg time was needed to bring things back to spec. Given its relatively average performance I would prefer to keep Chemdog 4 over CDSR. There just wasn't enough positives to keep it vs Chemdawg 4.

Dog eat dawg world.

## **Midnight Farms 24K**

Origin: California

I just didn't like this clone, odd structure, and little to no feedback from growers. Release in 2016 and eventually culled in 2017. No plans on replacing 24K. Cut was selected because a grower RB26 was growing 24K. Low demand for this cut locally.

## **Midnight Farms Bruce Banner 3**

Origin: California

This cut was released 2016, however its not been positive as far as reviews, there could have been problems with the cut or its not the real BB3, the problems with the MF cut is everybody complained about it not building frost. Huge flowers, but little resin production. This is a huge disappointment. Now the ole Internet says one of the strongest strains on earth. Well not with this cut. I have confirmed tests of other cultivars higher than the upper limit of BB3. THC was untested of BB3. Smoke report says its ok, but just lacks bag appeal.

No plans to replace BB3, in my defense I did buy the cut at a dispensary with a good reputation. So if anything I blame midnight farms. I did not see BB3 recently, so in my mind this was not a good cut at all.

This goes back to cut testing and feedback, I need to know if something doesn't perform well I only want to circulate the highest quality genetics. I wont take it personally, I prefer the truth.

# Midnight Farms Citrus Sap

Origin: California

Lineage: GG4 x Tangie Sativa/Indica Hybrid

History: Cut was released in 2016, however the cut was culled due to 1 report of hermies, In hindsight I should not have culled it based on one grower, he is trusted . However it could have been heat induced stress that caused hermies. The other growers that had citrus sap did not complain about hermies. Who knows what happened, a lot of feedback was submitted with citrus sap, its possible the cut is in circulation in the Anchorage area.



**AK Green Labs LLC**  
2509 Fairbanks Street, Suite A  
Anchorage, AK 99503  
(907) 770-9997



## Cannabinoid Profile

Customer: [REDACTED]		
Sample name: Citrus Sap		
AKGL LIMS ID: AK21179-4	Sample type: Flower	Date submitted: 02/14/2017
METRC #: N/A	Sample mass (g): 0.52	Date tested: 02/14/2017
Test site: AK Green Labs LLC	Instrument: HPLC-PDA	Report date: 02/16/2017

Cannabinoid	% mass
Δ <sup>9</sup> -THC	0.4%
THCA	17.4%
CBD	---
CBDa	0.5%
CBN	---
CBC	---
CBDV	---
CBDVA	---
CBG	0.3%
THCV	---



Lots of good feedback on this one, looking back on this test 17.4 THCA isn't exactly impressive, however there are ways to get inflated numbers. This particular sample after talking with the grower was taken as a random sample from the batch. We've figured out how to get higher tests but I'm freemarket and I do not follow rules as defined for legal growers that should be taking random homogenous samples. We are looking at the upper limit, not batch averages. **I'm of the opinion that Citrus Sap could test much higher.**

Citrus sap is discontinued, as much as it is a favorite of a few clients and growers, the 1 hermie report makes me not want to carry it in the nursery. No plans to get another cut of Citrus Sap.

I really enjoyed Citrus Sap, the GG4 really hits.



## **Midnight farms Gorilla Glue 4/ Queen Bee Gorilla Glue #4/Medical Organics GG4**

Origin: California

Note: LA Cannabis Cup winner 2014

Status: **GG4 MO cut is being mommed out, look for cuts late 2017. MF cut has been trashed because of possible problems with the cut, its unknown what the problem is with resin development. DHN cut is being tested**

Lineage: Chem Sis x Sour Dub x Chocolate Thai

History: Kick back and have a smoke, I'm going to have a vent session about this one

I've been chasing a legitimate cut of GG4 not for days, or weeks but YEARS. Even within the cali dispensaries, there is a bit of a confuckulation. Yea I said that.

So lets start at the beginning, my first attempt of getting GG4 was in Seattle a few years ago, a Cali grower I got hooked up said he had GG4, so sure, I'm in I want a cut. So I bring back the cut and a put out a few testers. As far as I knew at the time GG4 has a tucked leaf deformity or a leaf twist. It had that look too it.

Unfortunately, one person decided to distribute that GG4, I told them I didn't know if it was real that is why I needed testing. And it turned out not to be GG4 but a hybrid. To add to the frustration the tester didn't contact me, I literally had to find him. Mind you this was pre DGA days. So that cut of GG4 was not authentic, purple and not the partial stacked cola that GG4 has. That cut was renamed "Snowstorm" but I do not know if its still being circulated. Either way, I think I was still carrying that cut when I started DGA.

So that cut was pushed out of the garden, I decided to try again this time from a more reputable source,

So I go to California, and I get a Midnight Farm cut and a Queen B cut, It was assumed at the time that GG4 clone is same from nursery to nursery. I guess I was wrong, but I'll elaborate on this later.



So I operated under the assumption that this has to be the real GG4 cut. Well let's just say that the cultivation site and a tester had issues with the cuts, the potency and frost was lacking and there was serious doubt if it was GG4, again the tip twist was there, just the Gorilla Glue wasn't very.. gluey..

I kept the mother around, but on a recent trip to Cali, I talked to another cultivator that wasn't tied to the dispensary, and I got a better idea of the situation. Summer of 2017

And he said something like this to me. There are different phenotypes of GG4.

Of course I'm like what?.. that doesn't make any sense to me GG4 is GG4 right?.. Well I was wrong, I'm operating from memory here but he tells me that GG4 isn't used like how I'm thinking its more or less used like a name. Not as cut identification. So what he's saying in essence, is that there are fake glue cuts floating around even in the dispensary.

Anyways, I finally got some information that Medical Organics cut was the real cut, I need to confirm this but Josey Whales was the one that walked in to give MO the cut. I had one client asking me for the GG4 cut, I picked up 2 cuts 3 total, 2 DHN GG4 cuts and 1 MO cut for the guy that was asking me for a GG4 clone, I had promised him a GG4 cut for a few weeks now but due to timing, and circumstance and difficulty cloning GG4 the nursery move did not go as planned and a lot of cuts were delayed. But even though I have a bad history with this client, he was the one that passed the Seattle GG4 hybrid around I thought I would make good, and get the best cut possible.

Back to the GG4 situation as I understand it, Medical Organics were the original people that had the cut DHN says they got the GG4 cut one person removed from Josey, so Its likely it's from MO, So in my opinion the most legitimate cut is Medical Organics.

So back to the house, the Medical Organics cut makes it, zero issues and its clean. So I contact the client asking me for GG4. Well, now he doesn't want it, he got it from somewhere else. I did charge additional for the cut, but nothing outrageous. Doesn't matter he still doesn't want it.

So I guess it's a mixed blessing I now have the cut I've been searching for from very reputable nurseries, Dark Heart and Medical Organics. DHN is out for testing right now, and MO is being mommed out, I'm very confident that I finally have the right cut. The GG4, MF cut has been trashed and replaced with MO, GG4 cut.

If I even hear GG4 I'll freak out. No not really, I've just spend a lot of time and money on this one, if either of these cuts are wrong I'm trashing them and do a few bong hits to clear my mind of anything associated with GG4.

## Midnight Farms Super Skunk

Mixed feedback on this one, a few clones were released. I think the problem was ripen time. You have to go past 10 weeks to get good results, either way the tester I was working with didn't think much of it but one cultivator thought it was ok. Low demand for this cultivar. No plans of getting another cut.

Cut is discontinued as of late 2016.

## Queen Bee Birthday Cake



Origin: California

Lineage: GSC x Cherry Pie. Indica/Sativa hybrid. Also known as Wedding Cake or Pink Cookies.

Status: **Currently in production summer 2017. Multiple moms have been made of Bcake.**

I selected this cut just by pure chance, there were some finished flowers, and I looked at it just amazing resin development, and a very unique smell.

Vanilla, cakey, hint of lemon, and strong, one of my medical clients gives it high ratings as medicine.

The tester I ran was amazing, it almost looks fake, really impressive resin development. A real nod to GSC heritage. Forum cut GSC has a long hashy trichome, this has just lots of them. Not a lot of specialized feeding was done to get that appearance, I will say dropping the temp does help with resin development.

Bday cake is a great improvement over Forum cut GSC, and Platinum GSC, it makes up in yield, but still retains a lot of potency. Lack of yield seems to be a problem with cookie cultivars. Not with birthday cake. I think one of my testers was getting 3 oz's off of one plant, and I agree, I've run it and seen great vigor and the nugget like dense flowers that is popular these days.

Unverified report of 25%+ THC, (Leafy)

It's a keeper, its been doing well in gardens.

## Rosetta Stone



Origin: Selected phenotype in Alaska, from F1 seeds, Brother Grimm

Lineage: White Widow x Ginger Ale

**Status: Discontinued 2017, no plans to replace.**

Cuts were released in 2016 to 2017. It was interesting for the terpene quality, a real stinker of a plant, most likely the cut is in circulation.

## Bodhi Mountain Temple Hash F3

Origin: Bodhi, but MTH is known for being tall for indoor but selective breeding over 3 generations to bring down the height for indoor situations therefore this is an F3 of the original MTH.

Lineage: Mountain Temple is a big yielding haze/chem family hybrid, using the proven male of Appalachia: h&l's hybrid of green crack and jj's tres dawg wed to the totem pole haze temple mother cut, sativa leaning cultivar.

Status: In production, cuts slowly coming out. Released in 2016.

10 week flower time, frost development comes in later weeks. Has flower structure closer to sativas, Has been getting a lot of positive reviews on quality of high, good for daytime enjoyment. Even with the sativa background, the structure is a little lanky but not a mess.

## **Chimaera Schnzzleberry**

Origin: Chimera, F1 keeper, selected in Alaska.

I had a brief encounter with this cultivar, I took the cut because of its yield, however the potency was average, and its structure was similar to trainwreck,. This might be good for clients seeking lower potency strains for daytime medical use but this does not fit in with the other cultivars, I want exceptional cultivars. It did have nice chunky flowers similar to chemdog 4 but lacked other qualities I am looking for. I will take potency over looks.

Discontinued 2017 no plans to replace. a few cuts made it out there.

## **Jolly Rancher**

Origin: Matsu Clone

Status: Released 2016, Discontinued 2017

In a way I wanted to keep this clone, the vigor was excellent, it was very tough and could withstand over underfeeding and put out nice dense flowers. Potency was good, leafy says it's a sativa dominant cultivar, but it felt more indica to me.

Because of limited space I had to push this one out.



# Black Death #3

**AK Green Labs LLC**  
 2509 Fairbanks Street, Suite A  
 Anchorage, AK 99503  
 (907) 770-9997  
 sales@akgreenlabs.com



## Cannabinoid Profile

Customer: F██████████	Sample type: Flower	Date submitted: 04/20/2017
Sample name: Black Death	Sample mass (g): 0.49	Date tested: 04/24/2017
AKGL LIMS ID: AK25245-4	Instrument: HPLC-PDA	Report date:
METRC #: N/A		
Test site: AK Green Labs LLC		

Cannabinoid	% mass
Δ <sup>9</sup> -THC	1.4%
THCA	18.3%
CBD	---
CBD-A	0.1%
CBN	---
CBC	---
CBDV	---
CBDVA	---
CBG	0.1%
THCV	0.1%
Δ <sup>8</sup> -THC	---



Origin: Local Clone, Bred by Mr B.

Lineage: Black Lime x Malawi

Status: Growing a mother, cuts should be available later in 2017

Nice resin production, medium sized flowers, good terpene quality, nice even long lasting buzz. It tests at 18%THCA but we think there was sample mishandling leading to some average numbers, a retest may be in order for higher numbers.

$\Delta^9$ -THC Potency =  $[\Delta^8\text{-THC}] + [\text{THC-A}] \times 0.877 = 1.4\% + 18.3\% \times 0.877 = 17.5\%$   
 CBD Potency =  $[\text{CBD}] + [\text{CBD-A}] \times 0.877 = 0.0\% + 0.1\% \times 0.877 = 0.1\%$   
 Method: AK-SOP-002 & AK-SOP-008

This report and all information herein shall not be reproduced without the written consent of AK Green Labs LLC or the Customer. This report is for informational purposes only and should not be used to diagnose, treat or prevent any medical related symptoms. Results are applicable only to samples tested and for the specific tests conducted.

© 2017 AK Green Labs LLC All Rights Reserved

HPLC\_P01\_A001-v01

# Blacktite



Origin: Bred By Mr B,

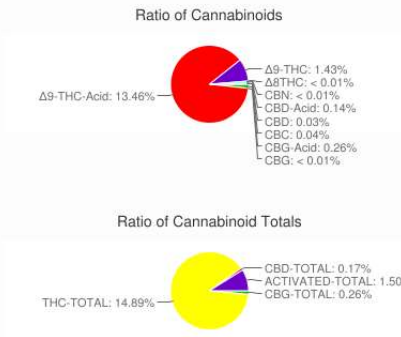
Lineage: Black Lime (unknown phenotype) x Loctite (Mt Ranier x GG4)

Status: Keeper hunt stopped, I will return to this at a later date.

## Forum Cut Girl Scout Cookies

### Potency Profile

▶ 0.26% CBG-A
▶ < 0.01% CBG
▶ 0.26% CBG-TOTAL
▶ 13.46% Δ9-THC-A
▶ 1.43% Δ9-THC
▶ < 0.01% Δ8-THC
▶ < 0.01% CBN
▶ 14.89% THC-TOTAL
▶ 0.14% CBD-A
▶ 0.03% CBD
▶ 0.17% CBD-TOTAL



Origin: Seattle Washington from a Forum member

Lineage: OG Kush x Durban Poison

Status: Discontinued Late 2016

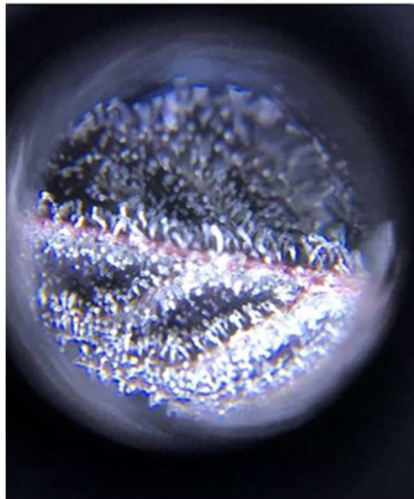
Forum Cut GSC Test.

### History

I have passed out at least 100 + of FCGSC, low yield, and somewhat sensitive to nutrients, but excellent appearance and potency. Long hashy trichomes, and a citrus chocolate aroma. Golf

ball sized nuggets of good density. Leaves will turn black during ripen, does better in hydro but in a soil grow the terpene quality is better. Discontinued in favor of Platinum GSC cut. I also think this test is undervalued, GSC should test higher, and I think a bad sample was sent to the lab,

## Irene OG



Origin: Imported clone.

Lineage: OG Phenotype, Indica/Sativa

Status: In production, some cuts being released.

History: Release in 2016, been getting good feedback on this one, very appealing aroma, sweet herbal notes that make it stand out. One grower says that he's getting a premium price for the Irene OG flowers. Nice relaxing body/mind effects.

# Killer Orange

History: KO, is just something I took down to the lab to get tested, as much as I would like to add it to the nursery there are no plans to pass the clone out. High test of 27% THCA, and long lasting. Clones are not available, please don't ask for KO.

**AK Green Labs LLC**  
 2509 Fairbanks Street, Suite A  
 Anchorage, AK 99503  
 (907) 770-9997  
 sales@akgreenlabs.com



## Cannabinoid Profile

Customer:	Sample type: Flower	Date submitted: 03/28/2017
Sample name: Killer Orange	Sample mass (g): 0.51	Date tested: 03/30/2017
AKGL LIMS ID: AK23719-5	Instrument: HPLC-PDA	Report date: 03/31/2017
METRC #: N/A		
Test site: AK Green Labs LLC		

Cannabinoid	% mass
Δ <sup>9</sup> -THC	1.5%
THCA	27.1%
CBD	---
CBDA	0.1%
CBN	---
CBC	---
CBDV	---
CBDVA	---
CBG	0.2%
THCV	---
Δ <sup>8</sup> -THC	---



# Larry OG

Origin: Femmed Seed

Lineage: OG Kush x SFV OG


Status: No clone in circulation.

info@ak.steepphill.com **Cannabinoid Profile**

Customer:	Sample type: Flower	Date submitted: 05/22/2017
Sample name: Larry OG	Sample mass (g): 0.51	Date tested: 05/24/2017
AKGL LIMS ID:	Instrument: HPLC-PDA	Report date: 05/25/2017
METRC #: n/a		
Test site: Steep Hill Alaska		

Cannabinoid	% mass
Δ <sup>9</sup> -THC	0.4%
THCA	30.3%
CBD	---
CBDA	0.1%
CBN	---
CBC	---
CBDV	---
CBDVA	---
CBG	0.3%
THCV	0.1%
Δ <sup>8</sup> -THC	0.2%



History: Literally it was my last seed of Larry OG, It's the highest test that DGA has so far 30+% THCA, I asked for clones of Larry OG but they didn't make it. So as far as I know there are no more of this high test clone. There might be another one somewhere hiding, It would have been nice to see a clone of that released to everybody.

Highest test of all the gear we have seen, Done by T

## Loctite



Origin : Local Clone, Keeper phenotype

Lineage: Red Eye Genetics (GG4 x Mt Ranier)

Status: Clones available

History: I originally obtained the clone in late 2014, but was asked not to pass it, in early 2016 I was given permission from the grower that found the Loctite keeper phenotype. Outstanding potency, the flowers are a little loose, but this is typical of GG4. Average yield.

Has a really good reputation, and lots of positive feedback, Loctite structure isn't the greatest, but it makes up in resin and potency.



## Lo-Fi #1 Lo Fi #2

Origin: Breeding Project Delta Genetics

Lineage: Loctite x Fire OG

Status: Testing, and making mothers of #1 and #2. Possible release late 2017.

History: Cross made in 2016, Now being sorted, #1 is showing better structure than #2. Good frost development and column like structure making it ideal for SOG, improved plant height.

## Platinum Girl Scout Cookies



Origin: Local Clone

Lineage: Kush x Durban x (unknown)

Status: Released mid 2016 Discontinued 2017

History: Potent cookie cultivar, and improved "Cookie" average to low yield. Better yield vs. FGSC, but not as good as Birthday Cake. In a way I thought it was redundant to keep so many cookie cultivars. And a recent run of PGSC and Birthday cake, the Cake won out, just better vigor, and production, Birthday Cake from one

tester has said that its every bit as potent as PGSC. So PGSC was discontinued,

## Purple Malawi

Origin: Local Clone

Lineage: Ace Seeds, purple phenotype. Landrace sativa.

Status: Released 2016 Discontinued 2017

History: Purple phenotype of Malawi, 10 week flower time. This was the only landrace/variety I carried, one of the reasons for discontinuing this is I am looking for a different phenotype of Malawi that is more about potency. If I am going to carry a landrace I want the killer phenotype. A few were released in late 2016. I think its relatively original, most people focus on sativa/indica hybrids, this was tame enough for indoor gardens given its sativa dominate heritage.

## Chemical Weapon

Origin: California, Southfork Collective

Lineage: Bomb Bubba Kush x Chemdog 4 Bx.

Status: In production, being cloned.

History: Chemical Weapon was one of the first lab tested females I have. Lab claims 99% accurate, so I am waiting feedback and verification. Southfork seed reports from the breeder I work with shows very



consistent phenotype and is considered good enough to use directly from the pack. A bushy like growth pattern. I only have one phenotype so further testing is needed.

## Sour Dub

Origin: Imported Clone

Lineage: ECSD x Sour Dubble

Status: Released 2016, Mother lost 2017.

History: An elite clone only strain, released 2016 but the mother was lost 2017. Only a few were released, might be in circulation in Alaska. No plans to replace. Good terpene quality, however reagent based THC tests show average potency. I held this clone for a long time, before I was OK'ed to release it to the public. Looking at the leaf structure showed an indica dominant structure. At least I got a few clones out there.

## White Master Kush



Origin: Bred by Mr B./ Keeper phenotype Local Clone


Lineage: The White x Master Kush

Status: Vegging a mother for clones. Introduced to the garden 2017

History: New to the garden, and I'm glad I got a cut of this, frosty and yields from the test pictures I've seen. My experience with WMK is a sativa like experience, happy and dazed and confused with a bit of body high with it. I'm looking forward to put this out there.



620 F. Whitney Ave.  
Anchorage, AK 99501  
Phone: 907-258-6876

Sample ID: 142      Company:  Elmers Glue      METRC ID:      Personal Grow  
 Matrix: Dried Flower      Strain:      Date Received: 2016-11-09      Transport ID:      Personal Grow  
 Moisture Content: 4.26%  
**POTENCY RESULTS**  
 Total THC %: 15.85      Total CBD %: 0.03      THCA %: 17.16  
 THC %: 0.60      CBDA %: 0.04      CBD %: <0.01  
 CBN %: 0.03      THCV %: <0.01      CBGA %: 0.36  
 CBG %: 0.21      D-8 THC %: <0.01      CBC %: 0.03

**TERPENES RESULTS**

Alpha Pinene %:	N/A	Beta Pinene %:	N/A	Beta Myrcene %:	N/A
Camphene %:	N/A	D 3 Carene %:	N/A	A-Terpinene %:	N/A
P-Cymene %:	N/A	Limonene %:	N/A	Osmene %:	N/A
G-Terpinene %:	N/A	Terpinolene %:	N/A	Linalool %:	N/A
Isopulegol %:	N/A	Geraniol %:	N/A	B-Caryophyllene %:	N/A
A-Humulene %:	N/A	IsoNerolidol %:	N/A	TransNerolidol %:	N/A
A-Bisabolol %:	N/A	Guaiol %:	N/A		

**MICROBIAL RESULTS:**  
 Salmonella Result:      Overall Result:      E-Coli (STEC):  
 Aspergillus Flavus Result:      Aspergillus Fumigatus Result:  
 Aspergillus Niger Result:

**MICROSCOPE EVALUATION:**  
 Observations: Black hair; black spec of what appears to be resin or black ink



## Elmers Glue

Origin: Local Clone, keeper pheno, Original Breeder Red Eye Genetics

Lineage: GG4 x The White

Status: Discontinued 2017

History: Almost no demand for this clone, EG was tested @ 15%+. To be fair, this was a random sample. I think it could test higher but a different sample should have been submitted. Unlike the legal market I am not concerned with batch averages, I am looking for upper limits of the cultivar. It was culled due to low demand.

## New for 2017

Note: Seedstock was obtained from @ Emerald Cup 2016, Aficionado seeds were sent to the breeder for duplication, vigor and mold resistance. I do believe the generation of seeds put out by them is F1

Now this is where it gets interesting, Given they are F2 seeds, its possible that new traits could show up in this generation if we follow Mendel's law of segregation. But in the real world F1 differences can be observed in cannabis, I would guess the likelihood of more variation is possible with F2 Afi.

Should be interesting to see what's going to appear. Pheno fishing is planned for this fall.

Aficionado Grand Lemon Reserve F2

Aficionado Mandelbrot Oil Spill F2

Aficionado Rose Especial (Long Valley Royal Kush x Zkittlez) F2, Currently Germinating.

Aficionado White Cherry Truffle F2

New Clone Stock 2017

Darkheart Chernobyl

Darkheart Pre98 Bubba Kush

Darkheart Skywalker OG

Darkheart Strawberry Bannana

Darheart Gorilla Glue 4

Medical Organics Gorilla Glue 4

Uncle Buds Blue Light (NL x Blueberry)

Waiting on/looking for

Darkheart Sour Patch Kids

Darkheart WiFi

## **Summary:**

Highest Test : Larry OG

High THC content but not verified with Lab Results, Chemdawg 4, Birthday Cake.

High Yield, Chemdawg 4

Quality terpene profile: Irene OG, Black Lime Reserve, Sherbert

Sativa Dominant: Mountain Temple Hash

Indica Dominant: Blue Light, (coming soon in 2017)

Unique Color: Purple Cadillac

